

LUBL
BALTI INTL

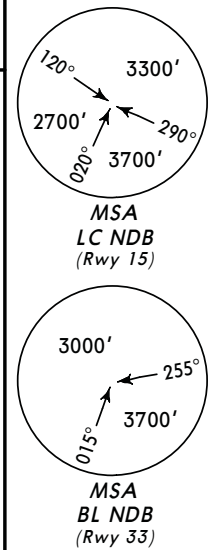
JEPPESEN
 26 FEB 10 **10-2** **Eff 11 Mar**

BALTI, MOLDOVA
STAR

Apt Elev 760' Alt Set: hPa Trans level: By ATC Trans alt: 4000'

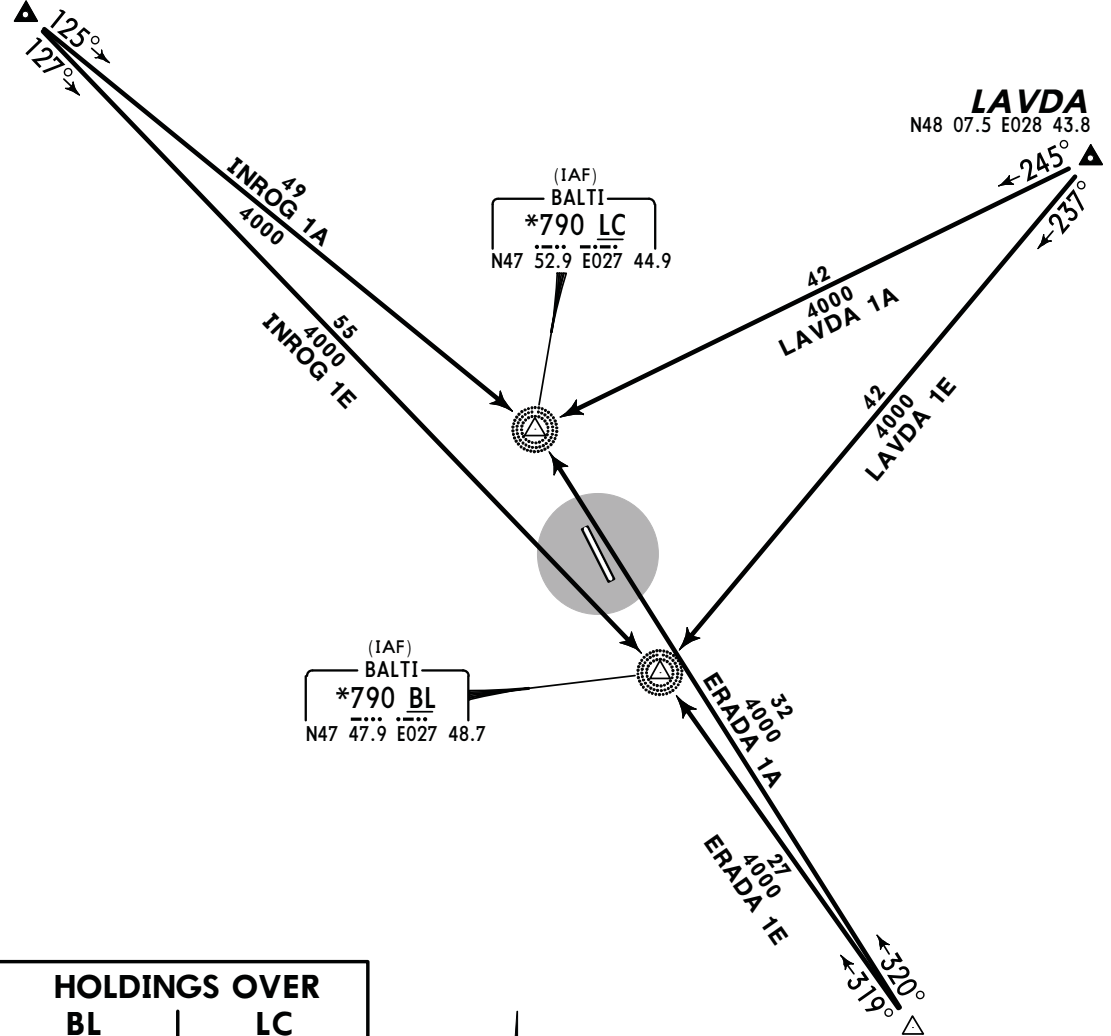
ERADA ONE ALFA (ERADA 1A) [ERAD1A]
 INROG ONE ALFA (INROG 1A) [INRO1A]
 LAVDA ONE ALFA (LAVDA 1A) [LAVD1A]
 RWY 15 ARRIVALS

ERADA ONE ECHO (ERADA 1E) [ERAD1E]
 INROG ONE ECHO (INROG 1E) [INRO1E]
 LAVDA ONE ECHO (LAVDA 1E) [LAVD1E]
 RWY 33 ARRIVALS

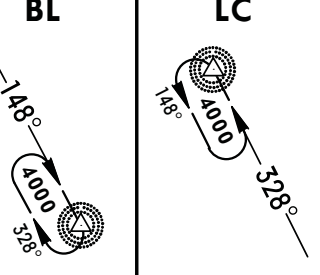


INROG
 N48 24.9 E026 48.8

LAVDA
 N48 07.5 E028 43.8



HOLDINGS OVER



For Flight Simulator use ONLY

www.Flightsim.ro

CHANGES: GETSU replaced by ERADA.

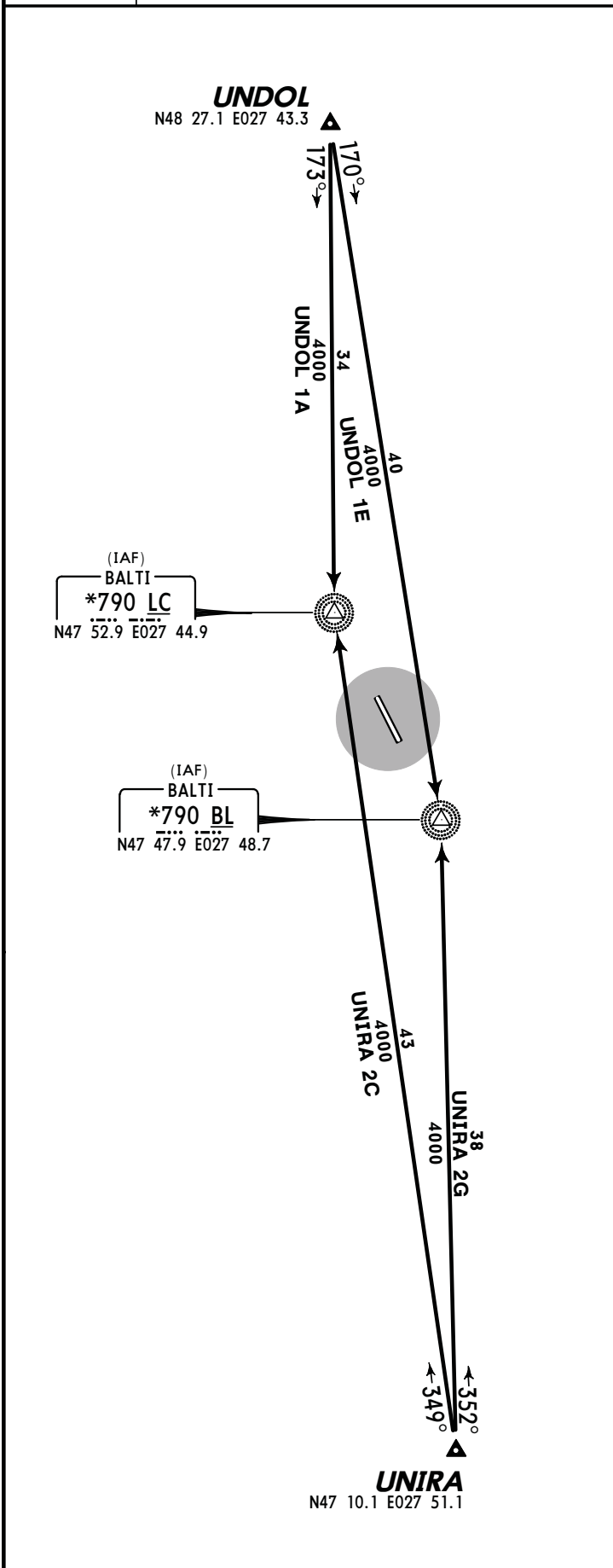
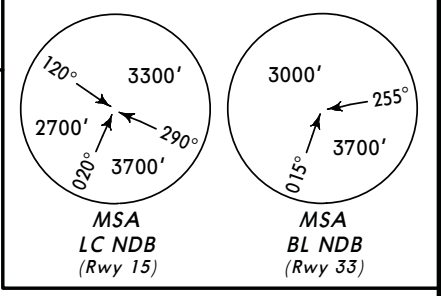
© JEPPESEN, 2003, 2010. ALL RIGHTS RESERVED.

LUBL
BALTI INTL

JEPPesen
 26 FEB 10 **(10-2A)** **Eff 11 Mar**

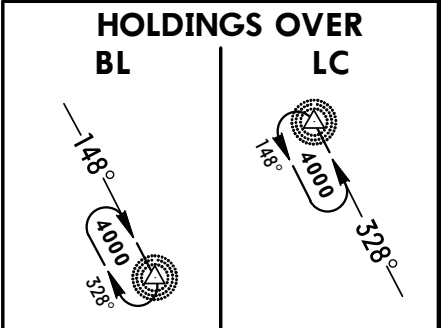
BALTI, MOLDOVA
STAR

Apt Elev
760'
 Alt Set: hPa
 Trans level: By ATC Trans alt: 4000'



UNDOL ONE ALFA
 (UNDOL 1A) [UNDO1A]
 UNIRA TWO CHARLIE
 (UNIRA 2C) [UNIR2C]
 RWY 15 ARRIVALS

UNDOL ONE ECHO
 (UNDOL 1E) [UNDO1E]
 UNIRA TWO GOLF
 (UNIRA 2G) [UNIR2G]
 RWY 33 ARRIVALS



For Flight Simulator use ONLY

www.FlightSim.ro

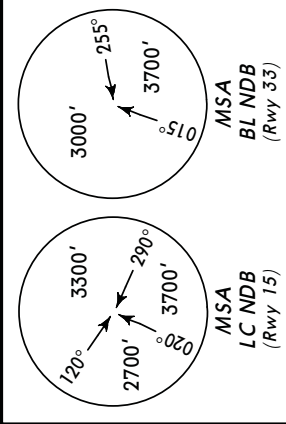
LUBL
BALTI INTL

JEPPesen
 26 FEB 10 **10-3** **Eff 11 Mar**

BALTI, MOLDOVA
SID

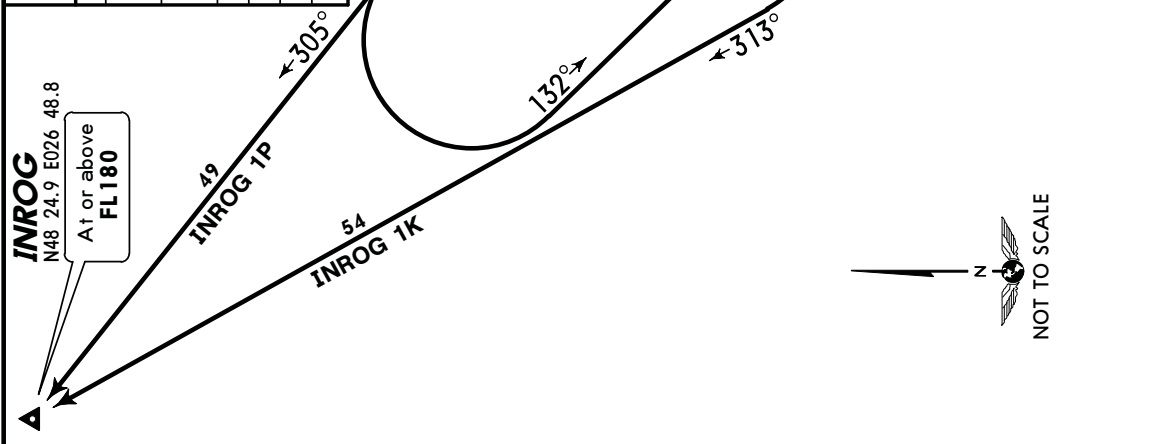
*BALTI Tower **122.30** *Apt Elev* **760'** Trans level: By ATC Trans alt: 4000'
 1. Contact BALTI Tower immediately after take-off.
 2. Turns are calculated with 240 KT and bank angle 20°.

ATREK ONE KILO (ATREK 1K) [ATRE1K]
ATREK ONE PAPA (ATREK 1P) [ATRE1P]
ERADA ONE KILO (ERADA 1K) [ERAD1K]
ERADA ONE PAPA (ERADA 1P) [ERAD1P]
INROG ONE KILO (INROG 1K) [INRO1K]
INROG ONE PAPA (INROG 1P) [INRO1P]
RWYS 15, 33 DEPARTURES



Initial climb clearance **ATREK 1K, 1P, ERADA 1K, 1P: FL70**
INROG 1K, 1P: FL180

ROUTING	
SID	RWY
ATREK 1K	15
ATREK 1P	33
ERADA 1K	15
ERADA 1P	33
INROG 1K	15
INROG 1P	33



For Flight Simulator use ONLY

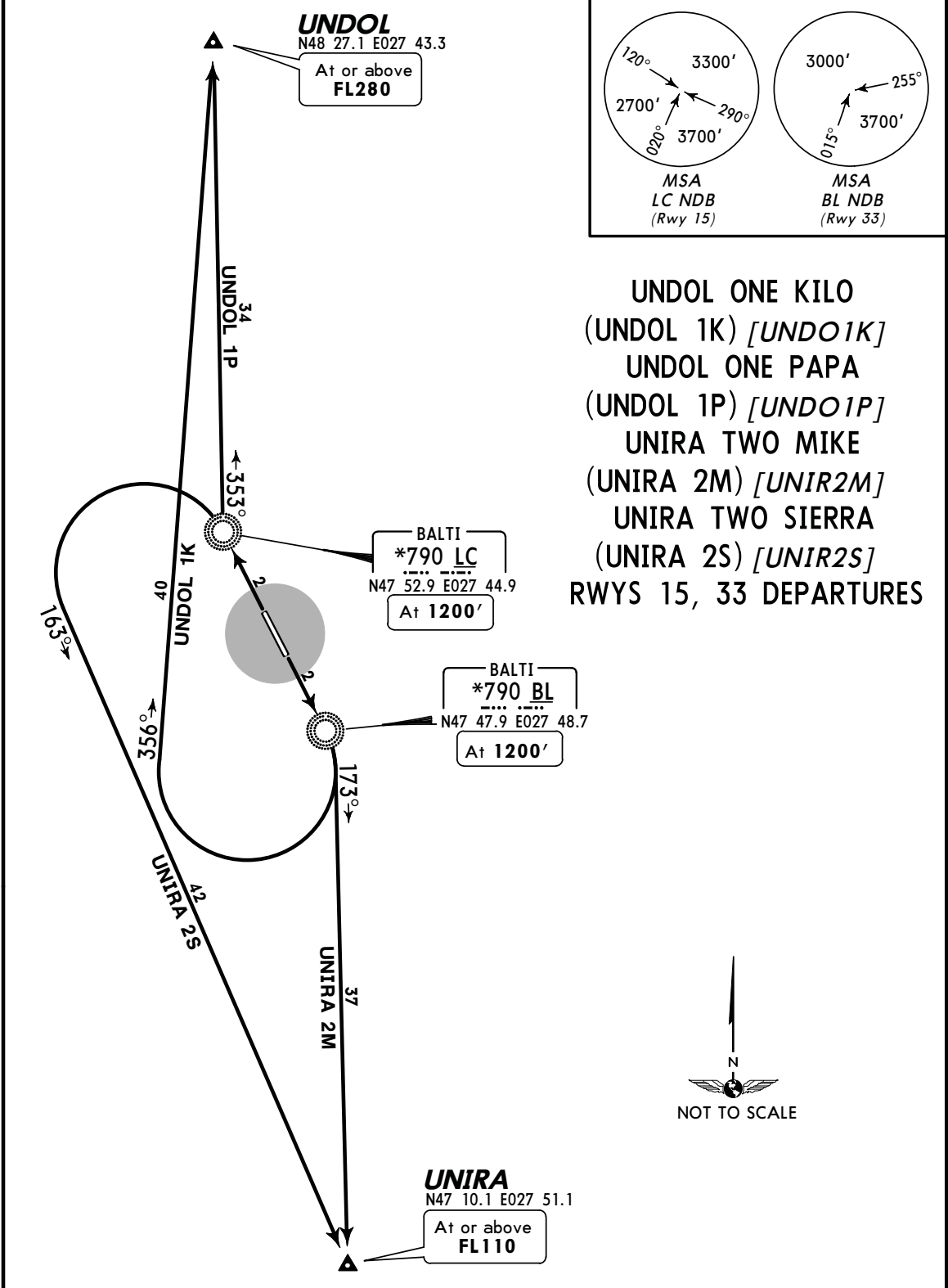
www.Flightsim.ro

LUBL
BALTI INTL

JEPPESEN
 26 FEB 10 **(10-3A)** **Eff 11 Mar**

BALTI, MOLDOVA
SID

*BALTI Tower 122.30	Apt Elev 760'	Trans level: By ATC Trans alt: 4000' 1. Contact BALTI Tower immediately after take-off. 2. Turns are calculated with 240 KT and bank angle 20°.
-------------------------------	-------------------------	--



Initial climb clearance **UNDOL 1K, 1P: FL280**
UNIRA 2M, 2S: FL110

SID	RWY	ROUTING
UNDOL 1K	15	Climb straight ahead to 1200' , turn RIGHT, 356° track to UNDOL.
UNDOL 1P	33	Climb straight ahead to 1200' , turn RIGHT, 353° track to UNDOL.
UNIRA 2M	15	Climb straight ahead to 1200' , turn RIGHT, 173° track to UNIRA.
UNIRA 2S	33	Climb straight ahead to 1200' , turn LEFT, 163° track to UNIRA.

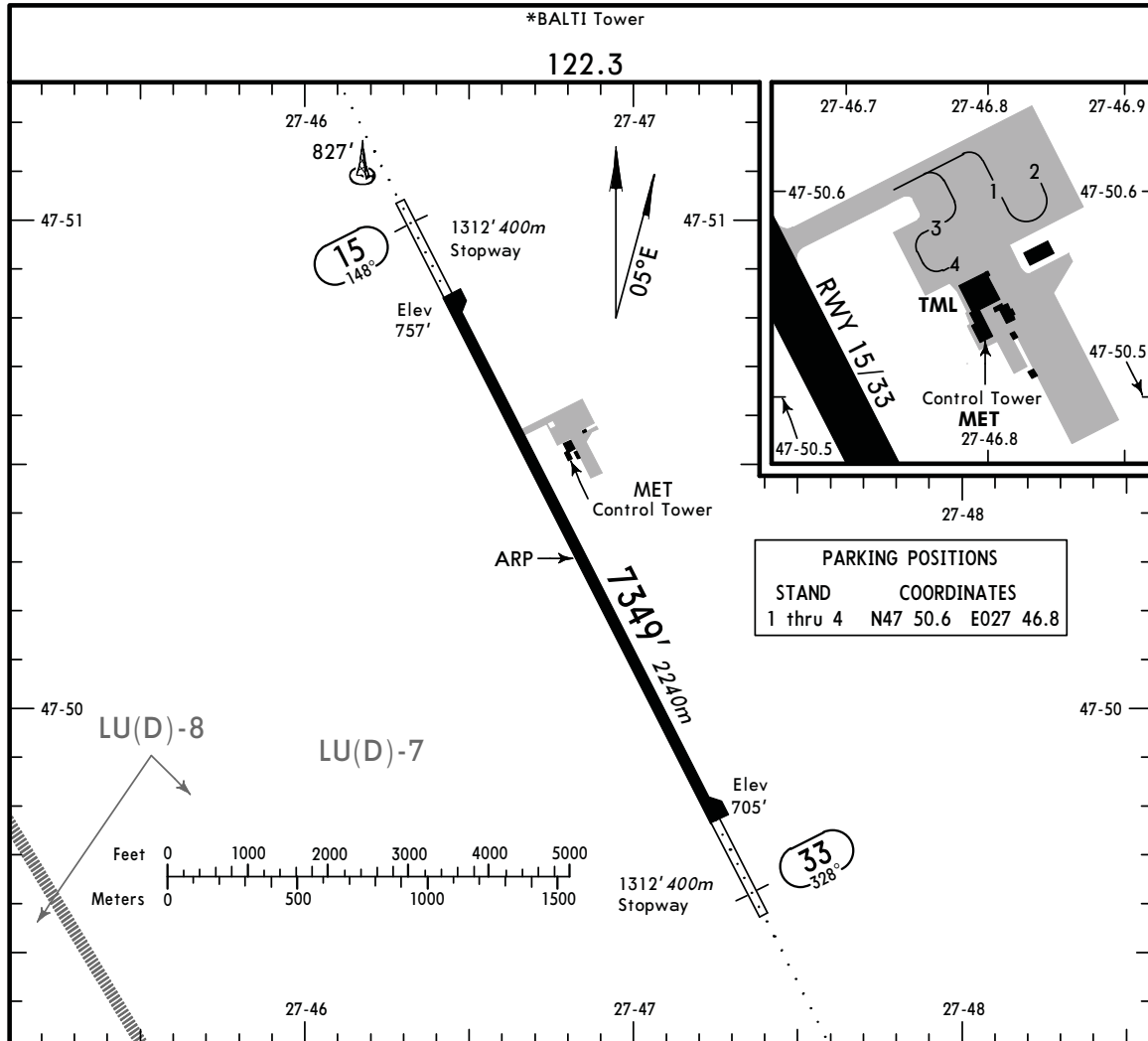
For Flight Simulator use ONLY

www.Flightsim.ro

LUBL
 Apt Elev **760'**
 N47 50.3 E027 46.8

JEPPESEN
 9 NOV 07 **(10-9)** Eff 22 Nov

BALTI, MOLDOVA
 BALTI INTL



PARKING POSITIONS

STAND	COORDINATES
1 thru 4	N47 50.6 E027 46.8

ADDITIONAL RUNWAY INFORMATION

RWY	SURFACE	USABLE LENGTHS			WIDTH
		Threshold	Landing Beyond Glide Slope	TAKE-OFF	
15 33	HIRL (60m) ALS TDZ		6498' 1981m		138' 42m

TAKE-OFF
 AIR CARRIER (JAA)
 All Rwy's

	LVP must be in force RCLM (DAY only) or RL	RCLM (DAY only) or RL
A		
B	250m	400m
C		
D	300m	

For Flight Simulator use ONLY

www.Flightsim.ro

LUBL
BALTI INTL

JEPPesen
9 NOV 07 **(11-1)** Eff 22 Nov

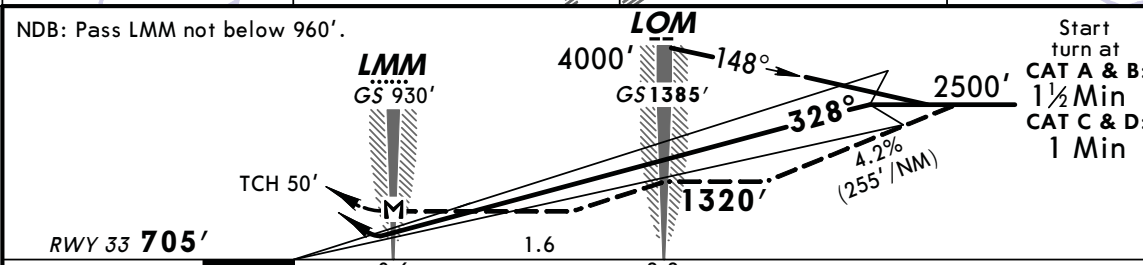
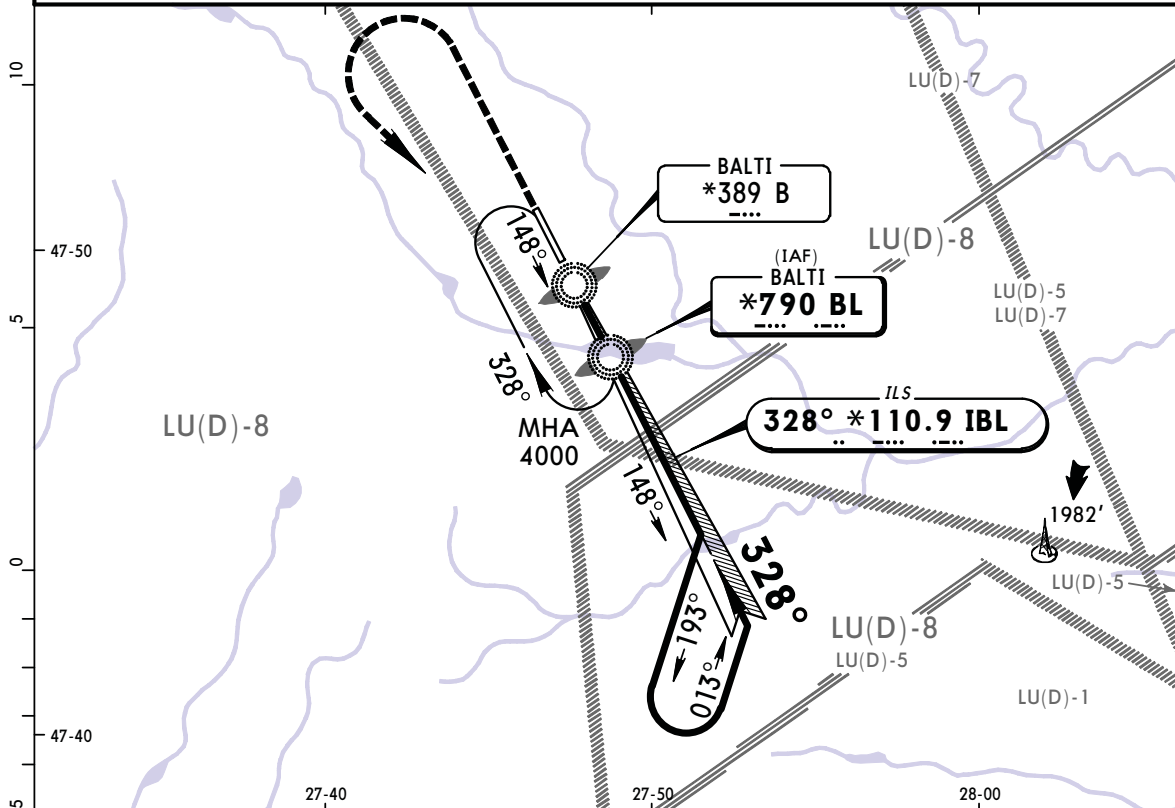
BALTI, MOLDOVA
ILS or NDB Rwy 33

*BALTI Tower
122.3

BRIEFING STRIP™	LOC IBL *110.9	Final Apch Crs 328°	GS LOM 1385' (680')	ILS DA(H) Refer to Minimums	Apt Elev 760' RWY 705'	
	NDB BL *790		Minimum Alt LOM 1320' (615')	NDB MDA(H) 1020' (315')		

MISSED APCH: Climb STRAIGHT AHEAD to 2500', then turn LEFT inbound BL NDB climbing to 4000'.
MSA BL NDB

Alt Set: hPa Rwy Elev: 26 hPa Trans level: By ATC Trans alt: 4000'



NDB: Pass LMM not below 960'.							Start turn at CAT A & B: 1 1/2 Min	Start turn at CAT C & D: 1 Min
LMM GS 930'							2500'	4000'
LOM GS 1385'							790	
TCH 50'							↑	↑
RWY 33 705'	0	0.6	1.6	2.2			LT	
Gnd speed-Kts	70	90	100	120	140	160		
ILS Gs 2.70°	339	436	485	582	679	776		
NDB Desc Grad 4.2%	298	383	425	510	595	681		
MAP at LMM							ALS	

STRAIGHT-IN LANDING RWY 33				CIRCLE-TO-LAND			
DA(H)		ILS C: 911' (206')		LOC (GS out)		NDB MDA(H) 1020' (315')	
AB: 905' (200') D: 922' (217')		FULL		ALS out		ALS out	
A					Max Kts	MDA(H)	
B					100	1160' (400') 1600m	
C	1200m		NOT AUTH		135	1260' (500') 1600m	
D					180	1480' (720') 3200m	
					205	1480' (720') 3600m	

PANS OPS

For Flight Simulator use ONLY

www.Flightsim.ro

LUBL
BALTI INTL



9 NOV 07 **(16-1)** Eff 22 Nov

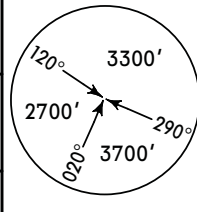
BALTI, MOLDOVA
NDB Rwy 15

*BALTI Tower
122.3

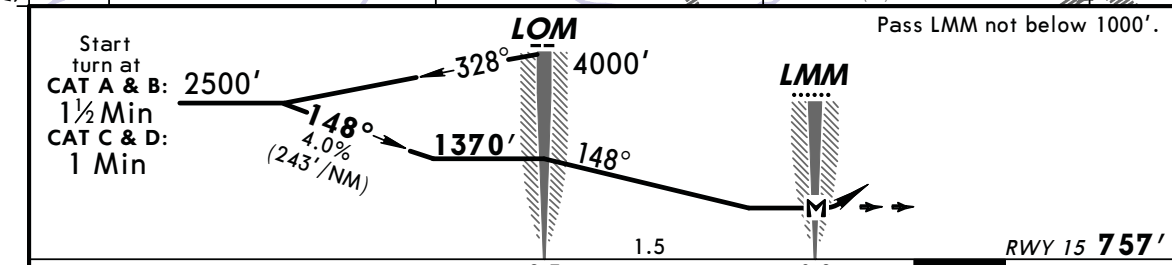
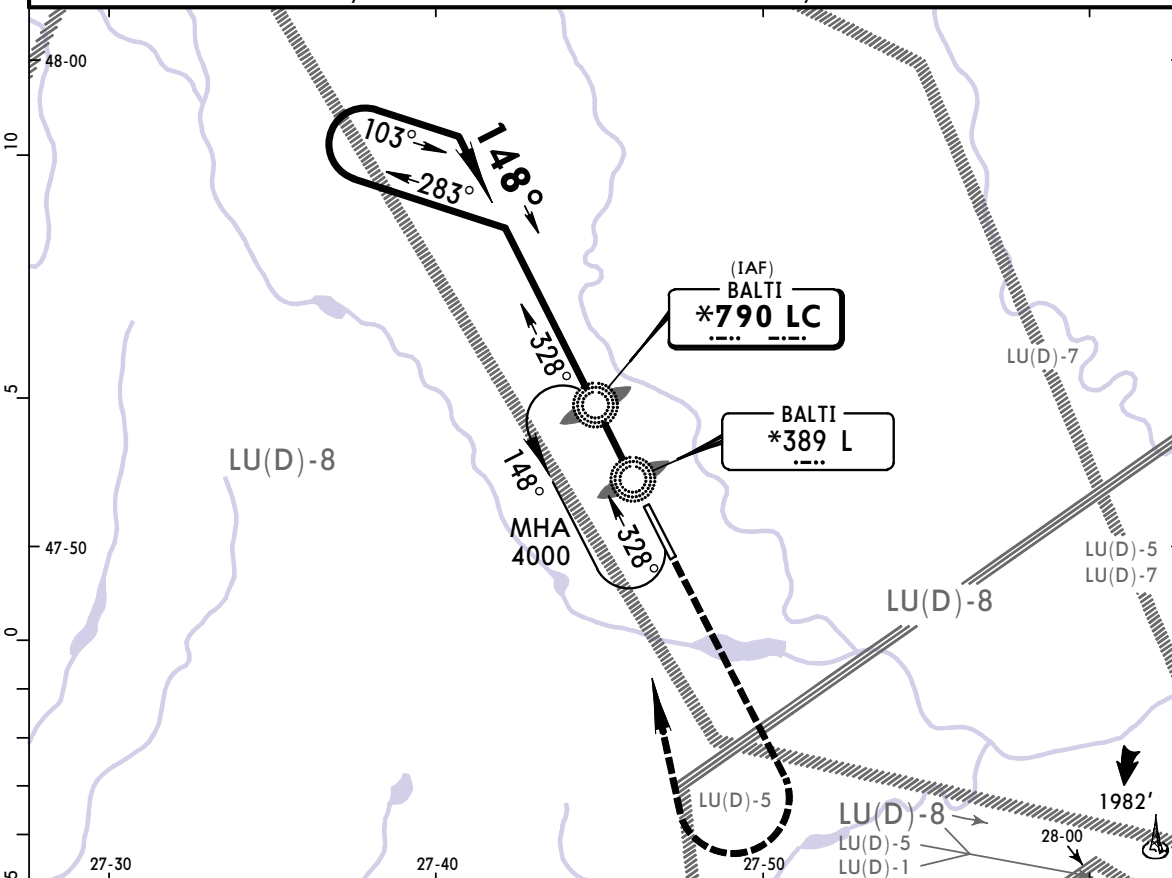
NDB LC *790	Final Apch Crs 148°	Minimum Alt LOM 1370' (613')	MDA(H) 1080' (323')	Apt Elev 760' RWY 757'
-----------------------	-------------------------------	--	-------------------------------	---

MISSED APCH: Climb STRAIGHT AHEAD to 2500', then turn RIGHT inbound LC NDB climbing to 4000'.

MSA LC NDB



Alt Set: hPa Rwy Elev: 27 hPa Trans level: By ATC Trans alt: 4000'



Gnd speed-Kts	70	90	100	120	140	160	ALS	2500'	LC 790	4000'
Descent Gradient 4.0%	284	365	405	486	567	648				
MAP at LMM										

STRAIGHT-IN LANDING RWY 15				CIRCLE-TO-LAND			
MDA(H) 1080' (323')				ALS out			
PANS OPS	A	1600m		Max Kts	MDA(H)		
	B			100	1160' (400')	1600m	
	C			135	1260' (500')	1600m	
	D			180	1480' (720')	3200m	
				205	1480' (720')	3600m	

For Flight Simulator use ONLY

www.Flightsim.ro